



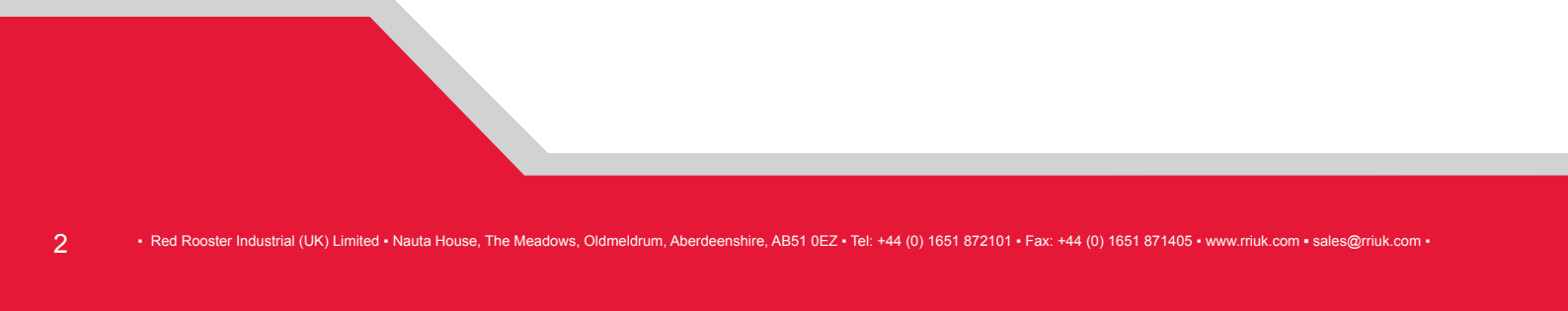
RED ROOSTER
INDUSTRIAL (UK) LTD

LOAD MEASURING EQUIPMENT CATALOGUE



EDITION 4

www.rriuk.com



CONTENTS

	PAGE
INTRODUCTION	4
SECTION 1 - LOAD LINKS	5
SELF INDICATING LINKS – TYPE RRI-S	6
REMOTE INDICATING LINKS – TYPE RRI-C	7
TELEMETRY LINKS – TYPE RRI-T	8
SECTION 2 - LARGE CAPACITY LINKS	9
SECTION 3 - LOAD SHACKLES	17
STANDARD LOAD SHACKLES	18
MARINE LOAD SHACKLES	19
SECTION 4 - COMPRESSION LOAD CELLS	21
SECTION 5 - RUNNING LINE MONITORS	25
SECTION 6 - CRANE WEIGHERS	29
SECTION 7 - REPAIRS AND CALIBRATION	32

At Red Rooster we design and manufacture a range of tensile digital load links and load shackles up to 500 tonne and compressive load cells up to 1500 tonne.

The load cells can be supplied with various types of displays – self indicating, remote indicating (with cable), and telemetry indicating (wireless display).

Options available include printer modules, large displays for cranes, PC interfaces and data logging to a spreadsheet with time and date.

Other types of load cells we offer include Precision Links, Load Pins, Digital Crane Weighers, Hydrostatic Crane Weighers and Running Line Monitors.

With our inhouse design and manufacturing we can offer special units, such as Marine Load Shackles, Weighing Systems, Weigh Platforms, Torque Cells and much more – please contact us if you have a special requirement for a load measuring device.

Our test rigs allow us to calibrate up to 400 tonne in Aberdeen / 50 tonne in West Bromwich. They are fully calibrated and UKAS (NAMAS) traceable.

Our qualified technicians can repair and calibrate most other manufacturer's load cells at our works. After inspection, a report and quotation is issued to enable the customer to decide on the viability of the repair. Once authorised by the customer, the repair is dealt with promptly and efficiently, to ensure a speedy return.

At Red Rooster, we also have a comprehensive range of Load Links, Load Shackles, Compression Load Cells and Running Line Monitors available for hire, which are supplied fully calibrated and are available at short notice.

We welcome your enquiries for load cell sales and hires, and our dedicated sales team will assist you with your enquiry to offer the best solution for your requirements.

Digital data sheets and parts lists are available from our website:
www.rriu.com

LOAD LINKS

RRI-S / RRI-C / RRI-T



RRI-S SERIES

Our RRI-S range of Self-Indicating Load Links has been developed from our well proven SWL range to meet the ever increasing requirements of our customers. The links range in capacity from 2 tonne to 25 tonne, and are manufactured from low weight, high strength duralloy. All links are proof loaded to 150% of the rated capacity and have a safety factor of 5:1 (minimum) and IP65 ingress protection.

RRI-C SERIES

Our RRI-C range of electronic handsets has been developed from our well proven SWLD range to meet the ever increasing requirements of our customers. The links are available across the full range in capacity from 2 tonne to 500 tonne, and are manufactured from low weight, high strength duralloy. All links are proof loaded to 150% of the rated capacity and have a safety factor of 5:1 (minimum) and IP68 ingress protection. The ergonomically designed handset, with tactile switch membrane, allows one handed operation and is environmentally sealed against water and dust to IP65. An easily accessible battery compartment allows the three "AA" batteries to be changed quickly.

RRI-T SERIES

Our RRI-T range of electronic handsets has been developed from our well proven SWLT range to meet the ever increasing requirements of our customers. The links range in capacity from 2 tonne to 500 tonne, and are manufactured from low weight, high strength duralloy. All links are proof loaded to 150% of the rated capacity and have a safety factor of 5:1 (minimum) and IP68 ingress protection. The ergonomically designed handset, with tactile switch membrane, allows one handed operation and is environmentally sealed against water and dust to IP65. An easily accessible battery compartment allows the three "AA" batteries to be changed quickly. Both the link and the handset are supplied in a single robust carry case for added protection.

RRI-S SELF INDICATING LOAD LINK

STANDARD FEATURES

- ▷ Microprocessor based digital electronics
- ▷ 11mm liquid crystal display
- ▷ Self-diagnostic (diagnoses fault with error code)
- ▷ Non-corruptible single point calibration
- ▷ 6 x "AA" Alkaline batteries
- ▷ Up to 24 hours** continuous use
- ▷ Robust carry case

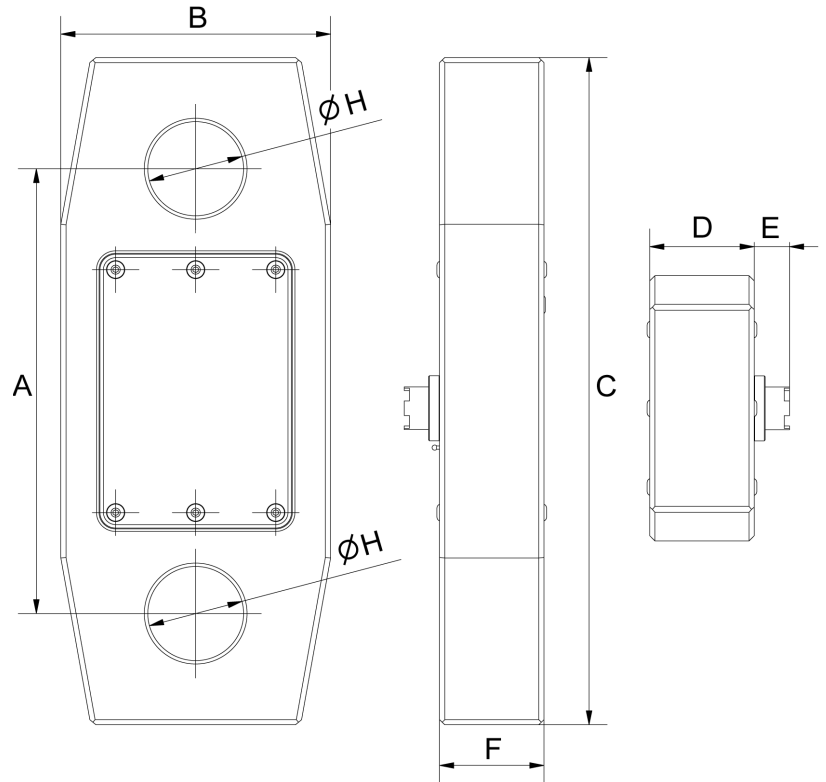
**Depending on charge and conditions

OPTIONAL FEATURES

- ▷ Rechargeable Lithium battery with charger

FUNCTIONS

- ▷ On/Off
- ▷ Tare
- ▷ Push button zero
- ▷ Low battery indicator
- ▷ Restricted access for programming
- ▷ Peak hold
- ▷ Select units in lbs, kg, tonne or US Tons



Drawing represents 25 tonne model



Image for illustration purposes only

Model	A	B	C	D	E	F	HØ
RRI-5S	225	125	290	60	20	32	27.5
RRI-12.5S	245	135	345	60	20	50	45
RRI-25S	260	155	390	60	20	60	55

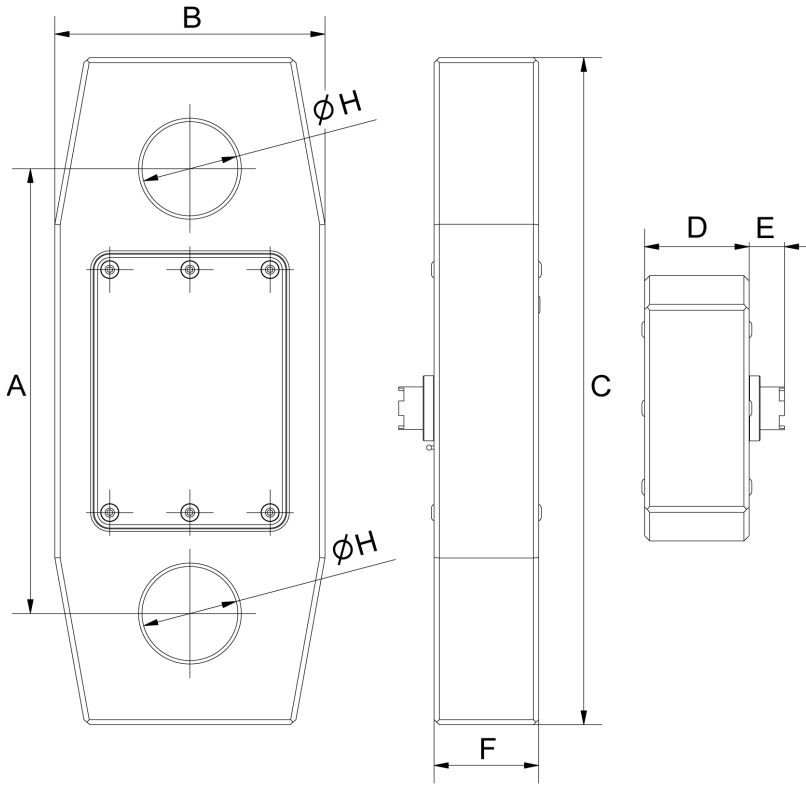
All measurements are in mm

Technical Specification			
Model	RRI-5S	RRI-12.5S	RRI-25S
Capacity	5 tonne	12.5 tonne	25 tonne
Shackle Size	6.5 tonne	13.5 tonne	25 tonne
Resolution	1 kg	1 kg	1 kg
Accuracy	< +/- 0.5% of FSD*		
Ingress Protection	IP68		
Temp Range	-10°C TO + 40°C		
Link Battery	6 x "AA" Alkaline batteries		
Link Weight	2.5 kg	4.5 kg	6.5 kg
Link with Case	6.5 kg	8.5 kg	10.5 kg

*Based on a BS1610 Grade 1 Calibration Machine
Information subject to change without notice



RRI-C REMOTE INDICATING LOAD LINK



Drawing represents 25 tonne model

STANDARD FEATURES

- ▷ On/Off
- ▷ Tare
- ▷ Zero
- ▷ Peak hold
- ▷ Low battery indicator
- ▷ Battery level indicator
- ▷ 3 x "AA" Alkaline battery
- ▷ Eight digit display
- ▷ Select units in lbs, kg, tonne or US Tons
- ▷ Rubber cover with lanyard
- ▷ Robust carry case
- ▷ 10m cable length from link to handset

OPTIONAL FEATURES

- ▷ RS232C output for printer or data logging with Pipeline® software to PC or print mode
- ▷ AA lithium batteries in handset for extended life
- ▷ Auto turn off after 5 minutes non use
- ▷ Backlit display

Model	A	B	C	D	E	F	HØ
RRI-5C	225	125	290	60	20	32	27.5
RRI-12.5C	245	135	345	60	20	50	45
RRI-25C	260	155	390	60	20	60	55
RRI-50C	300	185	480	75	20	75	75

All measurements are in mm

Technical Specification				
Model	RRI-5C	RRI-12.5T	RRI-25C	RRI-50C
Capacity	5 tonne	12.5 tonne	25 tonne	50 tonne
Resolution	1 kg	1 kg	1 kg	1 kg
Accuracy	< +/- 0.5% of FSD*			
Temp Range	-10 °C to +40°C			
Handset Dimensions	200mm x 95mm x 30mm (270g)			
Handset Battery	3 x "AA" Alkaline			
Battery Life	Alkaline "AA" continuous use: Minimum 75 Hours**			
Handset Display	8 digit x 8mm			
Shackle Size	6.5 tonne	13.5 tonne	25 tonne	55 tonne
Link Weight	2.5 kg	4.5 kg	6.5 kg	13.0 kg
Link with Case	6.5 kg	8.5kg	10.5 kg	19.0 kg

*Based on a BS1610 Grade 1 Calibration Machine

**Depending on charge and conditions

Information subject to change without notice



Image for illustration purposes only

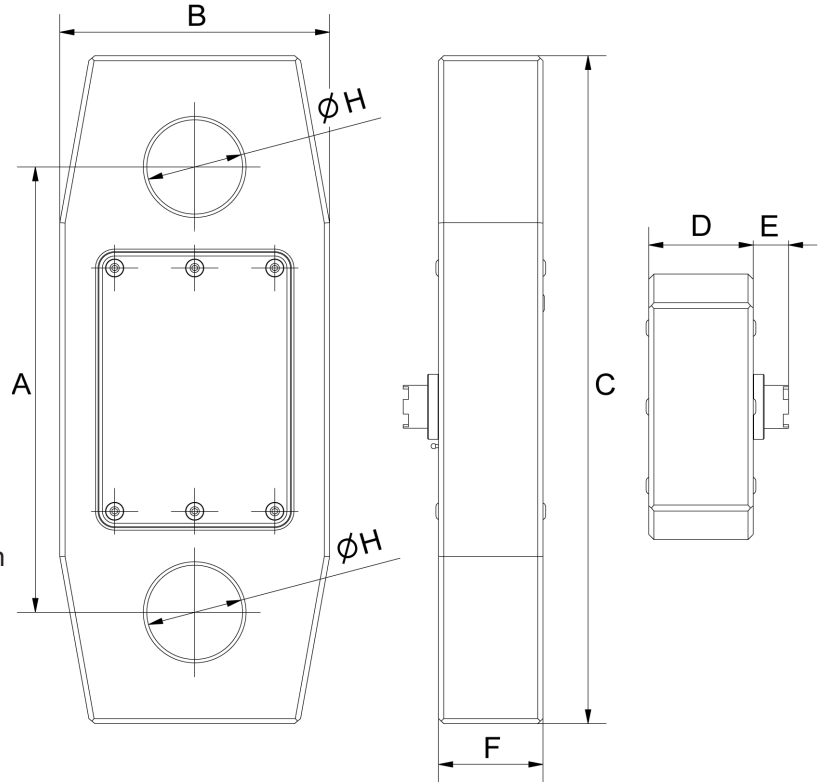
RRI-T TELEMETRY LOAD LINK

STANDARD FEATURES

- ▷ On/Off
- ▷ Tare
- ▷ Zero
- ▷ Peak hold
- ▷ Range 100m
- ▷ Battery level indicator
- ▷ Frequency 433MHz
- ▷ Eight digit display
- ▷ Select units in lbs, kg, tonne or US Tons
- ▷ Rubber cover with lanyard
- ▷ Robust carry case
- ▷ Load cell lasts 6 months on standby
- ▷ Remote turn off on load cell
- ▷ Up to 99 ID address codes
- ▷ Replaceable batteries in display and cell

OPTIONAL FEATURES

- ▷ RS232C output for printer or data logging with Pipeline® software to PC or print mode
- ▷ AA Lithium batteries in handset for extended life
- ▷ Link supplied for use with rechargeable Lithium-Ion battery pack and charger
- ▷ Auto turn off on display
- ▷ Backlit display



Drawing represents 25 tonne model



Image for illustration purposes only

Model	A	B	C	D	E	F	HØ
RRI-5T	225	125	290	60	20	32	27.5
RRI-12.5T	245	135	345	60	20	50	45
RRI-25T	260	155	390	60	20	60	55
RRI-50T	300	185	480	75	20	75	75

All measurements are in mm

Technical Specification				
Model	RRI-5T	RRI-12.5T	RRI-25T	RRI-50T
Capacity	5 tonne	12.5 tonne	25 tonne	50 tonne
Resolution	1 kg	1 kg	1 kg	1 kg
Accuracy	< +/- 0.5% of FSD*			
Temp Range	-10 °C to +40°C			
Handset Dimensions	200mm x 95mm x 30mm (270g)			
Handset Battery	3 x "AA" Alkaline			
Link Battery Life	Alkaline "AA" continuous use: Minimum 75 Hours** OR Rechargeable continuous use: 1 week**			
Handset Display	8 digit x 8mm			
Shackle Size	6.5 tonne	13.5 tonne	25 tonne	55 tonne
Link Weight	2.5 kg	4.5 kg	6.5 kg	13.0 kg
Link with Case	6.5 kg	8.5 kg	10.5 kg	19.0 kg

*Based on a BS1610 Grade 1 Calibration Machine

**Depending on charge and conditions
Information subject to change without notice

LOAD LINKS LARGE CAPACITY



Our RRI-T range of electronic handsets has been developed from our well proven SWLT range to meet the ever increasing requirements of our customers. The links range in capacity from 100 tonne to 500 tonne, and are manufactured from low weight, high strength duralloy. All links are proof loaded to 150% of the rated capacity and have a safety factor of 5:1 (minimum) and IP68 ingress protection.

The ergonomically designed handset, with tactile switch membrane, allows one handed operation and is environmentally sealed against water and dust to IP65. An easily accessible battery compartment allows the three "AA" batteries to be changed quickly.

Red Rooster large capacity links are also available as RRI-C remote indicating cabled models.

STANDARD FEATURES

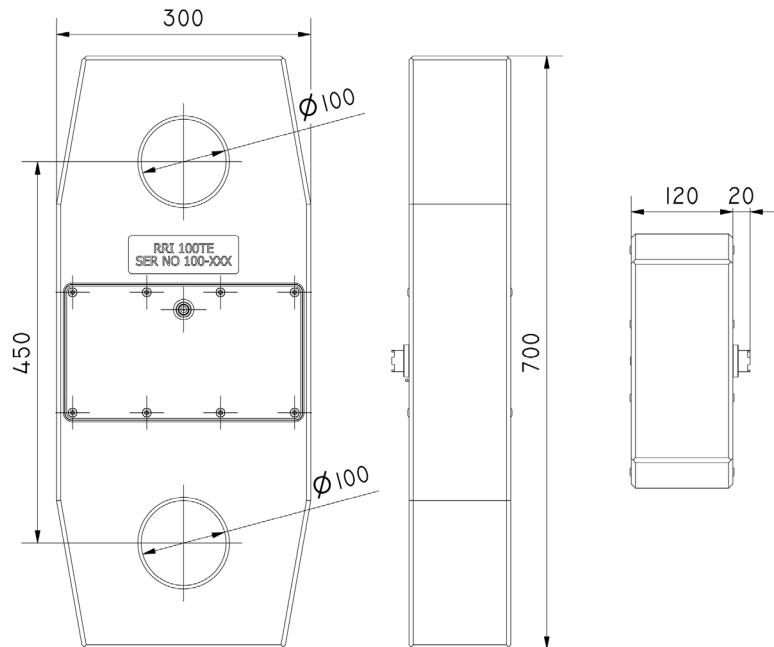
- ▷ On/Off
- ▷ Tare
- ▷ Zero
- ▷ Peak hold
- ▷ Range 100m
- ▷ Battery level indicator
- ▷ Frequency 433MHz
- ▷ Eight digit display
- ▷ Select units in lbs, kg, tonne or US Tons
- ▷ Rubber cover with lanyard
- ▷ Robust carry case
- ▷ Load cell lasts 6 months on standby
- ▷ Remote turn off on load cell
- ▷ Up to 99 ID address codes
- ▷ Replaceable batteries in display and cell

OPTIONAL FEATURES

- ▷ RS232C output for printer or data logging with Pipeline® software to PC or print mode
- ▷ AA Lithium batteries in handset for extended life
- ▷ Link supplied for use with rechargeable Lithium-Ion battery pack and charger
- ▷ Auto turn off on display
- ▷ Backlit display
- ▷ Cabled models also available



Image for illustration purposes only



All measurements are in mm

Technical Specification	
Model	RRI-100T
Capacity	100 tonne
Resolution	1 kg
Accuracy	< +/- 1.0% of FSD*
Temp Range	-10°C to +40°C
Handset Dimensions	200mm x 95mm x 30mm (270g)
Handset Battery	3 x "AA" Alkaline
Battery Life	Alkaline "AA" continuous use: Minimum 75 hours** OR Rechargeable continuous use: 1 week**
Handset Display	8 digit x 8mm
Link Weight	50 kg
Shackle Size	120 tonne

*Based on a BS1610 Grade 1 Calibration Machine

**Depending on charge and conditions

Information subject to change without notice



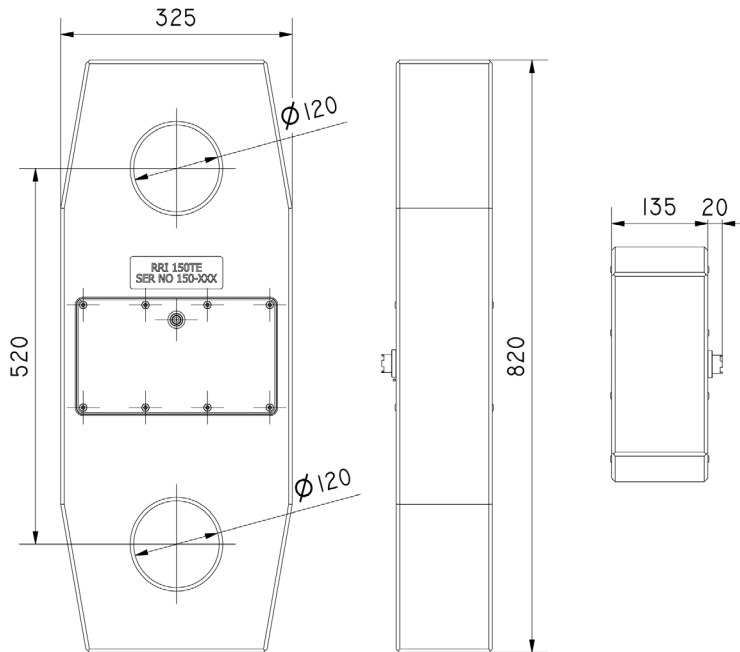
RRI-150T

STANDARD FEATURES

- ▷ On/Off
- ▷ Tare
- ▷ Zero
- ▷ Peak hold
- ▷ Range 100m
- ▷ Battery level indicator
- ▷ Frequency 433MHz
- ▷ Eight digit display
- ▷ Select units in lbs, kg, tonne or US Tons
- ▷ Rubber cover with lanyard
- ▷ Robust carry case
- ▷ Load cell lasts 6 months on standby
- ▷ Remote turn off on load cell
- ▷ Up to 99 ID address codes
- ▷ Replaceable batteries in display and cell

OPTIONAL FEATURES

- ▷ RS232C output for printer or data logging with Pipeline® software to PC or print mode
- ▷ AA Lithium batteries in handset for extended life
- ▷ Link supplied for use with rechargeable Lithium-Ion battery pack and charger
- ▷ Auto turn off on display
- ▷ Backlit display
- ▷ Cabled models also available



All measurements are in mm



Image for illustration purposes only

Technical Specification	
Model	RRI-150T
Capacity	150 tonne
Resolution	1 kg
Accuracy	< +/- 1.0% of FSD*
Temp Range	-10°C to +40°C
Handset Dimensions	200mm x 95mm x 30mm (270g)
Handset Battery	3 x "AA" Alkaline
Battery Life	Alkaline "AA" continuous use: Minimum 75 Hours** OR Rechargeable continuous use: 1 week**
Handset Display	8 digit x 8mm
Link Weight	75 kg
Shackle Size	150 tonne

*Based on a BS1610 Grade 1 Calibration Machine

**Depending on charge and conditions

Information subject to change without notice

STANDARD FEATURES

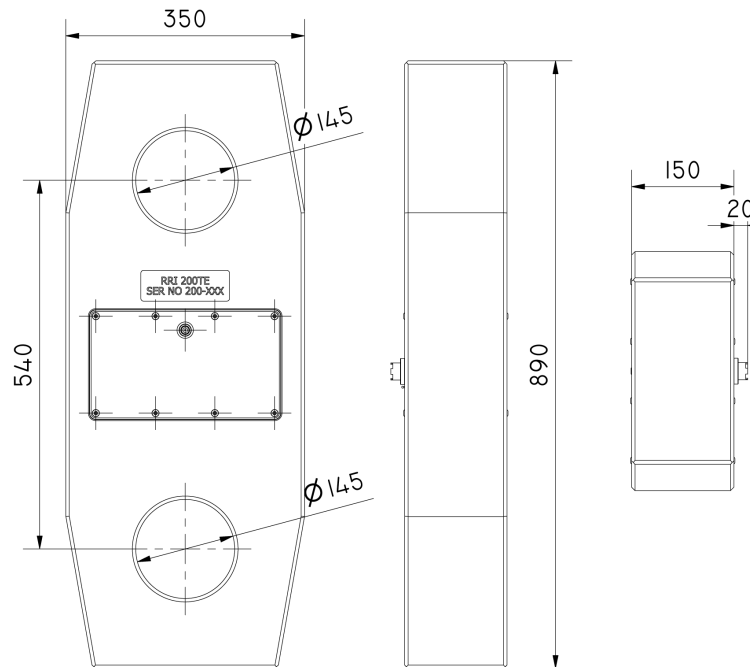
- ▷ On/Off
- ▷ Tare
- ▷ Zero
- ▷ Peak hold
- ▷ Range 100m
- ▷ Battery level indicator
- ▷ Frequency 433MHz
- ▷ Eight digit display
- ▷ Select units in lbs, kg, tonne or US Tons
- ▷ Rubber cover with lanyard
- ▷ Robust carry case
- ▷ Load cell lasts 6 months on standby
- ▷ Remote turn off on load cell
- ▷ Up to 99 ID address codes
- ▷ Replaceable batteries in display and cell

OPTIONAL FEATURES

- ▷ RS232C output for printer or data logging with Pipeline® software to PC or print mode
- ▷ AA Lithium batteries in handset for extended life
- ▷ Link supplied for use with rechargeable Lithium-Ion battery pack and charger
- ▷ Auto turn off on display
- ▷ Backlit display
- ▷ Cabled models also available



Image for illustration purposes only



All measurements are in mm

Technical Specification	
Model	RRI-200T
Capacity	200 tonne
Resolution	1 kg
Accuracy	< +/- 1.0% of FSD*
Temp Range	-10°C to +40°C
Handset Dimensions	200mm x 95mm x 30mm (270g)
Handset Battery	3 x "AA" Alkaline
Battery Life	Alkaline "AA" continuous use: Minimum 75 Hours** OR Rechargeable continuous use: 1 week**
Handset Display	8 digit x 8mm
Link Weight	95 kg
Shackle Size	200 tonne

*Based on a BS1610 Grade 1 Calibration Machine

**Depending on charge and conditions
Information subject to change without notice

RRI-300T

STANDARD FEATURES

- ▷ On/Off
- ▷ Tare
- ▷ Zero
- ▷ Peak hold
- ▷ Range 100m
- ▷ Battery level indicator
- ▷ Frequency 433MHz
- ▷ Eight digit display
- ▷ Select units in lbs, kg, tonne or US Tons
- ▷ Rubber cover with lanyard
- ▷ Robust carry case
- ▷ Load cell lasts 6 months on standby
- ▷ Remote turn off on load cell
- ▷ Up to 99 ID address codes
- ▷ Replaceable batteries in display and cell

OPTIONAL FEATURES

- ▷ RS232C output for printer or data logging with Pipeline® software to PC or print mode
- ▷ AA Lithium batteries in handset for extended life
- ▷ Link supplied for use with rechargeable Lithium-Ion battery pack and charger
- ▷ Auto turn off on display
- ▷ Backlit display
- ▷ Cabled models also available

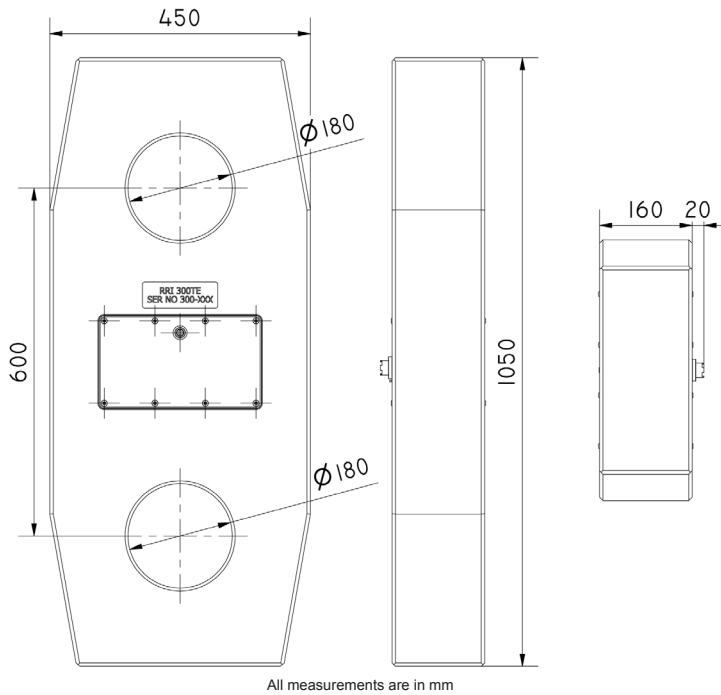


Image for illustration purposes only

Technical Specification	
Model	RRI-300T
Capacity	300 tonne
Resolution	1 kg
Accuracy	< +/- 1.0% of FSD*
Temp Range	-10°C to +40°C
Handset Dimensions	200mm x 95mm x 30mm (270g)
Handset Battery	3 x "AA" Alkaline
Battery Life	Alkaline "AA" continuous use: Minimum 75 Hours** OR Rechargeable continuous use: 1 week**
Handset Display	8 digit x 8mm
Link Weight	160 kg
Shackle Size	300 tonne

*Based on a BS1610 Grade 1 Calibration Machine
 **Depending on charge and conditions
 Information subject to change without notice

STANDARD FEATURES

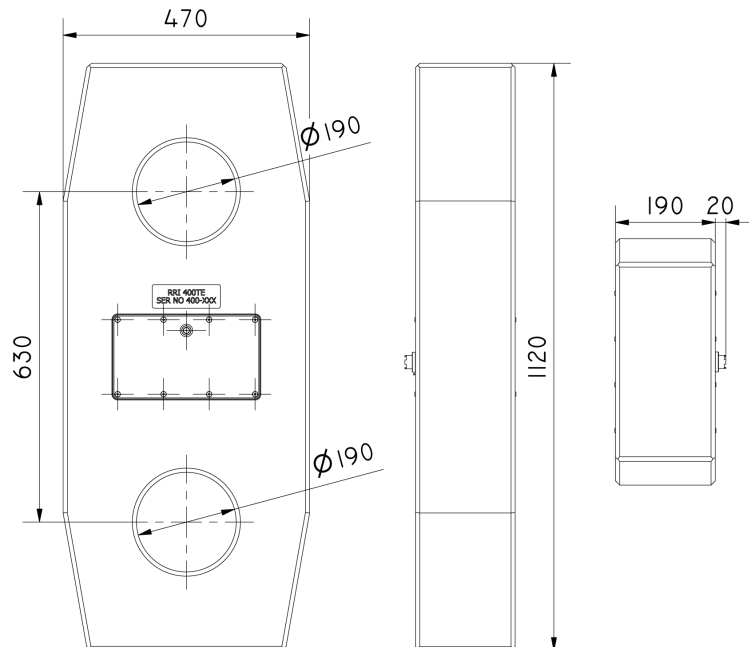
- ▷ On/Off
- ▷ Tare
- ▷ Zero
- ▷ Peak hold
- ▷ Range 100m
- ▷ Battery level indicator
- ▷ Frequency 433MHz
- ▷ Eight digit display
- ▷ Select units in lbs, kg, tonne or US Tons
- ▷ Rubber cover with lanyard
- ▷ Robust carry case
- ▷ Load cell lasts 6 months on standby
- ▷ Remote turn off on load cell
- ▷ Up to 99 ID address codes
- ▷ Replaceable batteries in display and cell

OPTIONAL FEATURES

- ▷ RS232C output for printer or data logging with Pipeline® software to PC or print mode
- ▷ AA Lithium batteries in handset for extended life
- ▷ Link supplied for use with rechargeable Lithium-Ion battery pack and charger
- ▷ Auto turn off on display
- ▷ Backlit display
- ▷ Cabled models also available



Image for illustration purposes only



All measurements are in mm

Technical Specification	
Model	RRI-400T
Capacity	400 tonne
Resolution	1 kg
Accuracy	< +/- 1.0% of FSD*
Temp Range	-10°C to +40°C
Handset Dimensions	200mm x 95mm x 30mm (270g)
Handset Battery	3 x "AA" Alkaline
Battery Life	Alkaline "AA" continuous use: Minimum 75 Hours** OR Rechargeable continuous use: 1 week**
Handset Display	8 digit x 8mm
Link Weight	215 kg
Shackle Size	400 tonne

*Based on a BS1610 Grade 1 Calibration Machine

**Depending on charge and conditions

Information subject to change without notice

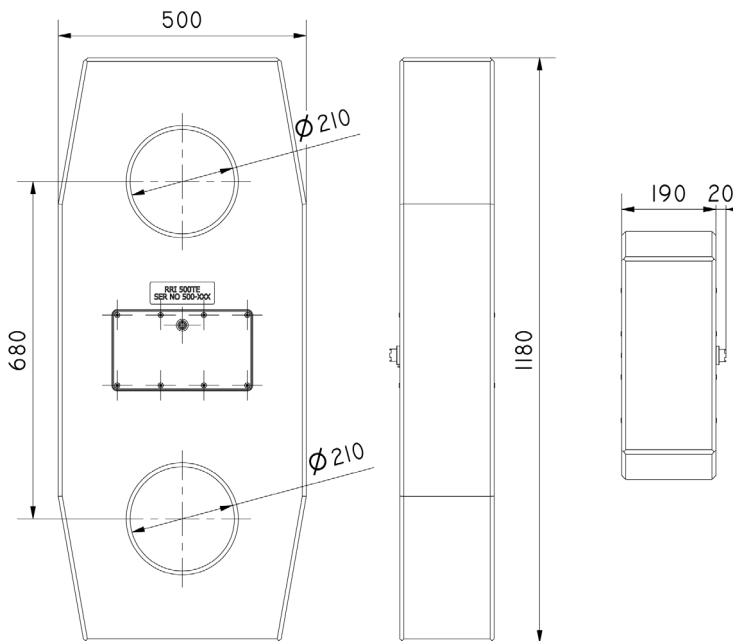
RRI-500T

STANDARD FEATURES

- ▷ On/Off
- ▷ Tare
- ▷ Zero
- ▷ Peak hold
- ▷ Range 100m
- ▷ Battery level indicator
- ▷ Frequency 433MHz
- ▷ Eight digit display
- ▷ Select units in lbs, kg, tonne or US Tons
- ▷ Rubber cover with lanyard
- ▷ Robust carry case
- ▷ Load cell lasts 6 months on standby
- ▷ Remote turn off on load cell
- ▷ Up to 99 ID address codes
- ▷ Replaceable batteries in display and cell

OPTIONAL FEATURES

- ▷ RS232C output for printer or data logging with Pipeline® software to PC or print mode
- ▷ AA Lithium batteries in handset for extended life
- ▷ Link supplied for use with rechargeable Lithium-Ion battery pack and charger
- ▷ Auto turn off on display
- ▷ Backlit display
- ▷ Cabled models also available



All measurements are in mm



Image for illustration purposes only

Technical Specification	
Model	RRI-500T
Capacity	500 tonne
Resolution	1 kg
Accuracy	< +/- 1.0% of FSD*
Temp Range	-10°C to +40°C
Handset Dimensions	200mm x 95mm x 30mm (270g)
Handset Battery	3 x "AA" Alkaline
Battery Life	Alkaline "AA" continuous use: Minimum 75 Hours** OR Rechargeable continuous use: 1 week**
Handset Display	8 digit x 8mm
Link Weight	235 kg
Shackle Size	500 tonne

*Based on a BS1610 Grade 1 Calibration Machine

**Depending on charge and conditions
Information subject to change without notice



LOAD SHACKLES

SWLS/SWLST SERIES

Produced in capacities from 25 tonne to 500 tonne. The shackle body is manufactured from galvanised alloy steel. The shackle pin (nickel steel up to 35 tonne, alloy steel on larger capacities) is retained in the shackle body by means of a nut and split pin, and an anti-rotation device is incorporated in the pin to ensure correct alignment. The pin itself is through bored and strain gauges are internally resin bonded at both shear planes. A close fitting tapered steel bobbin is included to ensure that the load is applied through the midline of the shackle pin. Load cell shackles are available in both cabled (SWLS) and radio telemetry (SWLST) versions. Up to 50 tonne capacity accuracy is better than 0.5% F.S.D. over 50 tonne accuracy is better than 1.0% F.S.D

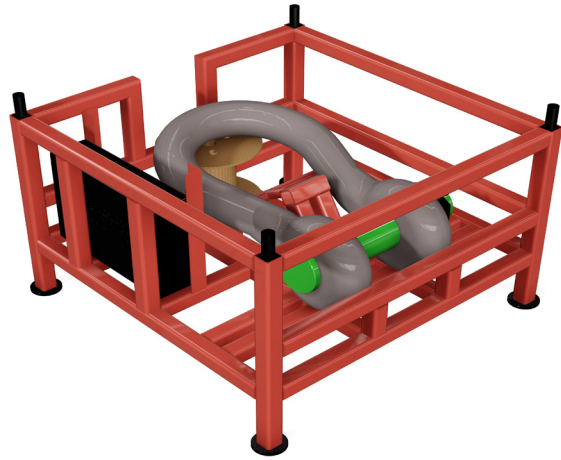
SWLSM SERIES

Produced in capacities from 50 tonne to 500 tonne. The shackle body is manufactured of galvanised alloy steel. The shackle pin is made from stainless steel and is retained in the shackle body by means of a nut and split pin. An anti-rotation device is incorporated in the pin to ensure correct alignment. The pin itself is through bored and strain gauges are internally resin bonded at both shear planes. A close fitting tapered steel bobbin is included to ensure that the load is applied through the midline of the shackle pin. Our range of marine load cell shackles are proof tested to 200% of the shackle WLL and come with a 5:1 factor of safety. Operational temperature range -20°C to +80°C.

SWLS(T) CABLED OR (T) TELEMETRY

STANDARD FEATURES

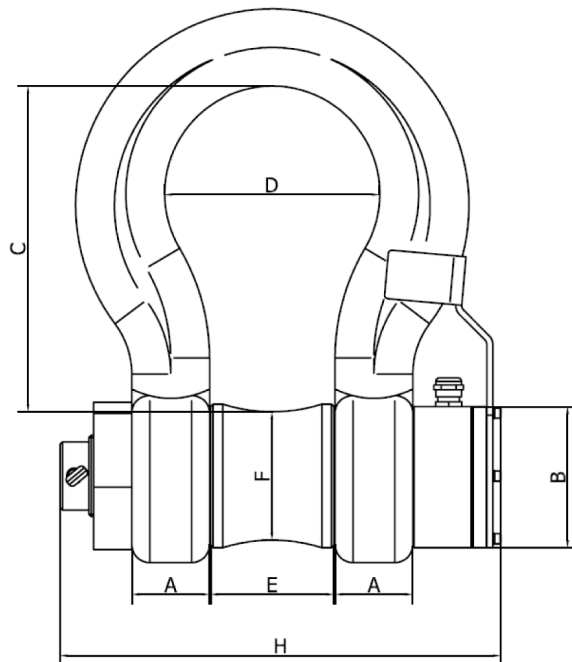
- ▷ Strain gauges fitted within the bore of the shackle pin for max protection
- ▷ Bow or 'D' type shackle to US Federal specification RRR-C-271D
- ▷ IP68 protection
- ▷ Robust waterproof plugs and sockets
- ▷ Interface to Ikon-tel or Ikon-cabled display
- ▷ Mains battery charger for shackle
- ▷ Handheld display powered by 3 x "AA" batteries
- ▷ 8 digit x 8mm display
- ▷ Robust carry case for display unit



Optional Transit Frame



Image for illustration purposes only



Technical Specification									
Model	Capacity	A	B	C	D	E	F	H	Weight
SWLS(T)25	25 tonne	50	120	182	111	83	85	320	~25 kg
SWLS(T)50	50 tonne	66	140	255	177	105	95	405	~41 kg
SWLS(T)70	70 Tonne	72	140	310	190	127	110	426	~65 kg
SWLS(T)85	85 tonne	73	140	335	195	128	110	540	~70 kg
SWLS(T)100	100 tonne	94	140	373	239	150	118	540	~90 kg
SWLS(T)150	150 tonne	100	140	380	265	165	150	620	~194 kg
SWLS(T)175	175 tonne	113	140	485	290	175	186	620	~265 kg
SWLS(T)250	250 tonne	115	140	495	305	200	200	675	~450 kg
SWLS(T)300	300 tonne	120	140	600	305	200	220	790	~842 kg
Temp Range	-10°C to +40°C								

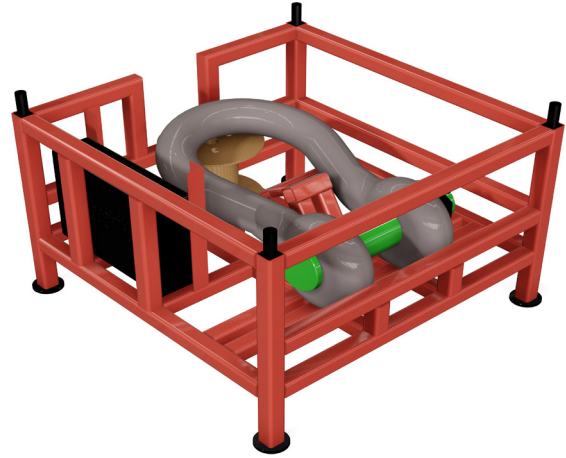
All measurements are in mm
Information subject to change without notice



SWLSM

STANDARD FEATURES

- ▷ Strain gauges fitted within the bore of the shackle pin for maximum protection
- ▷ Bow or 'D' type shackle to US Federal specification RRR-C-271D
- ▷ Shackle pin sealed to IP68 protection
- ▷ Robust nylon reinforced plugs and sockets with locked rings
- ▷ Interface to SWLPC display
- ▷ Mains battery charger with plug
- ▷ 6 digit x 18mm display
- ▷ Robust carry case for display unit



Optional Transit Frame

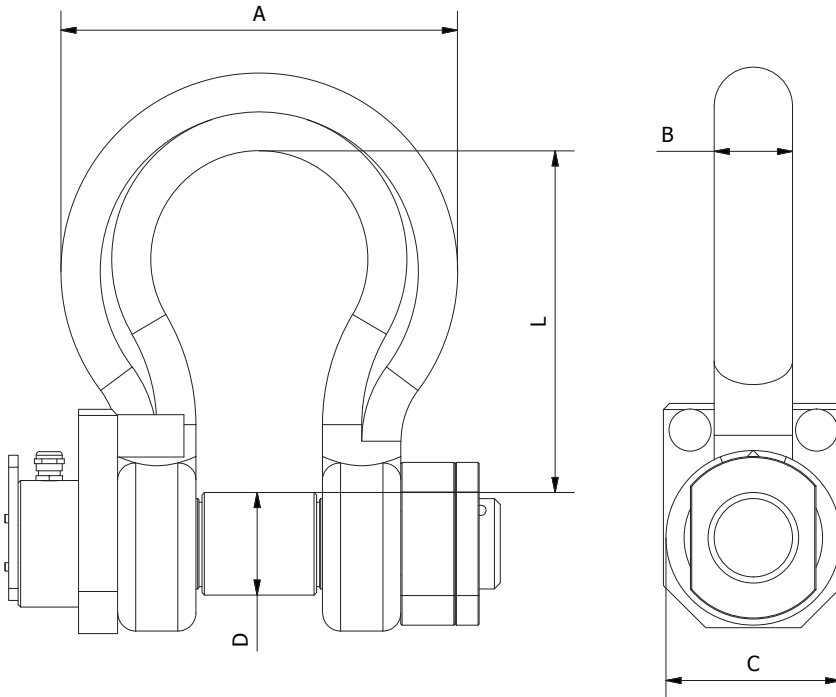


Image for illustration purposes only

Dimensions						
Model	Capacity	A	B	C	D	L
SWLSM50	50 tonne	253	53	122	57	197
SWLSM75	75 tonne	327	69	145	70	267
SWLSM100	100 tonne	365	79	165	82.5	330
SWLSM150	150 tonne	468	104	229	108	368
SWLSM200	200 tonne	533	114	267	121	397
SWLSM300	300 tonne	635	127	305	152	495
SWLSM400	400 tonne	660	152	356	178	572
SWLSM500	500 tonne	711	191	381	191	645

All measurements are in mm
Information subject to change without notice



COMPRESSION LOAD CELLS

SWLC750

Manufactured in a range of capacities from 0.5 tonne to 20 tonne from high strength stainless steel with an integrated load button. High quality gauges are used throughout the range to deliver a high accuracy. High standard IP protection against water and dust ingress to IP66. Supplied as standard with an individual hand held display per load cell, or can be supplied as a system with multiple cells configured to one display.

SWLC5500

Manufactured in a range of capacities from 0.5 kN to 50 kN from high strength aluminium. Can be wired for tension or compression. High quality gauges are used throughout the range to deliver a high accuracy. High standard IP protection against water and dust ingress to IP66. Supplied as standard with an individual hand held display per load cell, or can be supplied as a system with multiple cells configured to one display. Various fittings can be screwed into the M12/M20 threaded holes, such as eye bolts, clevises and rods.

SWLC9500

Manufactured in a range of capacities from 25 tonne to 1500 tonne from high strength stainless steel. High quality gauges are used throughout the range to deliver a high accuracy. High standard IP protection against water and dust ingress to IP68. Supplied as standard with an individual hand held display per load cell, or can be supplied as a system with multiple cells configured to one display.

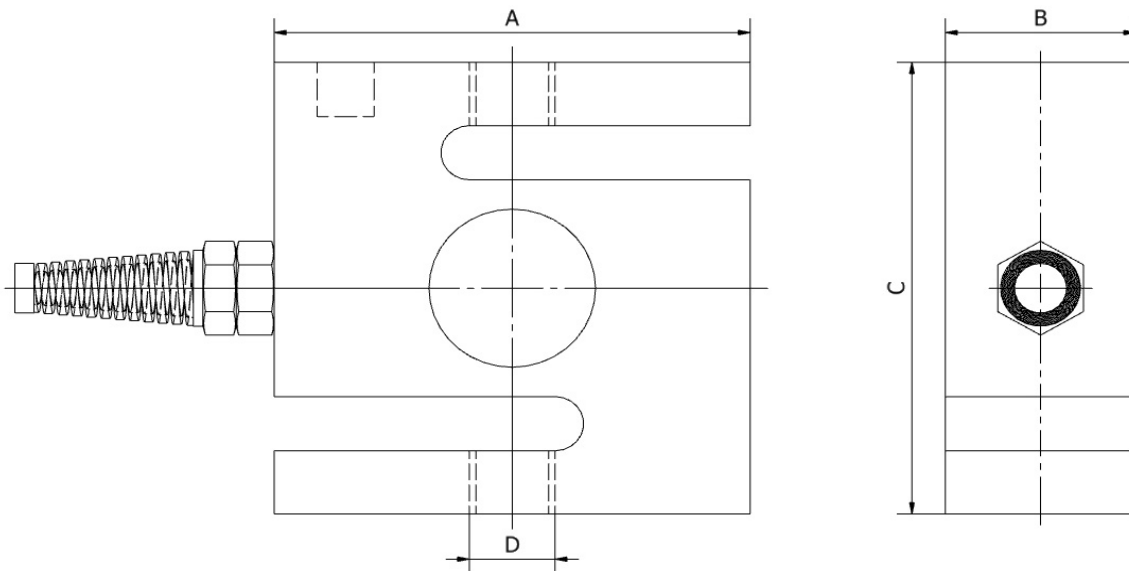
SWLC5500

Technical Specification		
Standard Load Ranges	kN	0.5, 1, 2.5, 5, 10, 20, 50
Safe Service Load	%	150
Ultimate Load	%	300
Input Resistance	Ω	380 +/- 30
Output Resistance	Ω	350 +/- 2
Creep after 30 mins (20°C)	%	< +/- 0.05%
Operational Temp Range	°C	-20 to +70
Environmental Protection	IP68	
Cable Length Standard	Metres	3
Insulation	G Ω	>2 at 100V.dc
Electrical Connections 6 Core Cable, Wired in Compression Mode		
Red	+ Input	
Blue	- Input	
Yellow	- Output	
Green	+ Output	
Black/White	Preset Cal Ref	

Note: All percentages related to Full Rated Load



Image for illustration purposes only



Capacity	A	B	C	D
0 - 0.5, 1, 2.5, 5kN	70.0	25.0	75.0	M12
0 - 10, 20kN	75.0	30.0	100.0	M20
0 - 50kN	100.0	30.0	120.0	M20

All measurements are in mm
Information subject to change without notice

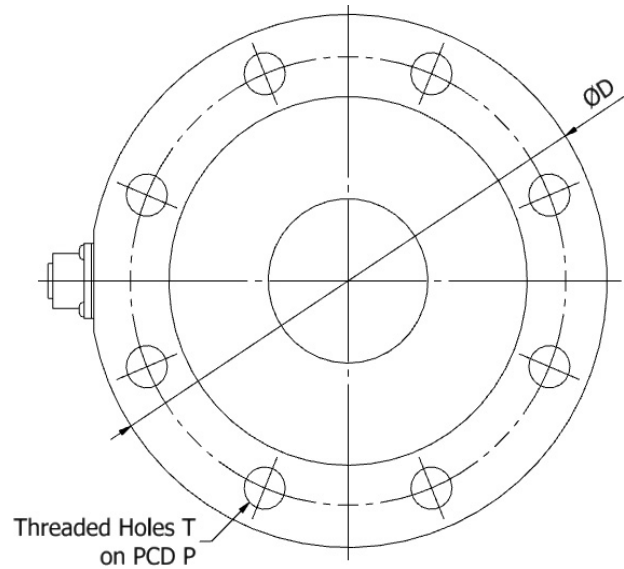
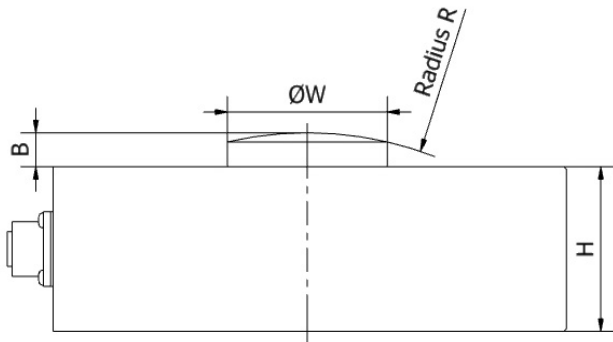
SWLC750



Image for illustration purposes only

Technical Specification		
Standard Load Ranges	tonne	0.5, 1, 2, 5, 10, 20
Safe Service Load	%	150
Ultimate Load	%	300
Input Resistance	Ω	750 +/- 20
Output Resistance	Ω	700 +/- 5
Operational Temp Range	$^{\circ}\text{C}$	-20 to +70
Environmental Protection	IP68	
Construction	Stainless Steel	
Insulation	G Ω	>2 at 100V.dc
Electrical Connections 6 Core Cable, Wired in Compression Mode		
Red	+ Input	
Blue	- Input	
Yellow	- Output	
Green	+ Output	

Note: All percentages related to Full Rated Load



Capacity (tonne)	B	ØD	H	P	R	T	ØW
0.5, 1	4	59	21	42	50	M3 x 7	10
2, 5, 10, 20	5	98	35	72	150	M6 x 18	20

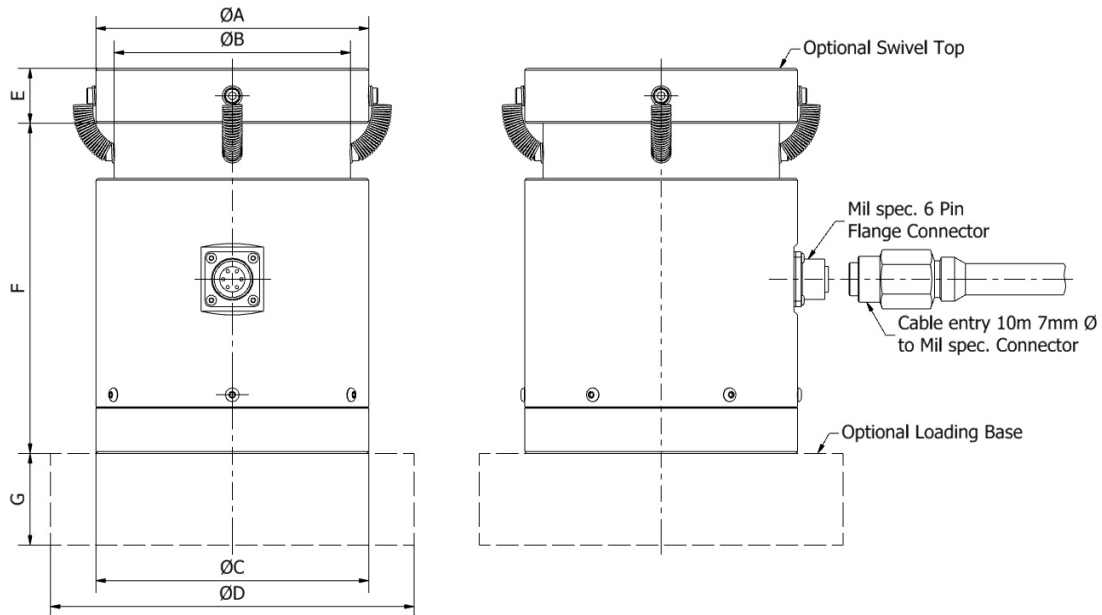
All measurements are in mm
 Information subject to change without notice

Technical Specification		
Standard Load Ranges	tonne	25, 50, 100, 200, 300, 400, 500, 1000, 1500
Safe Service Load	%	150
Ultimate Load	%	500
Safe Side Load	%	100
Input Resistance	Ω	700 (500-1500 to 1400 Ω)
Output Resistance	Ω	700 +/- 2
Creep after 30 mins (20°C)	%	< +/- 0.05%
Operational Temp Range	°C	-20 to +80
Environmental Protection	IP67	
Cable Length Standard	Metres	10
Insulation	G Ω	>2 at 100V.dc
Electrical Connections IP68 6 Way Amphenol Connector		
Pin A	+ Input	
Pin E	+ Output	
Pin C	- Input	
Pin F	- Output	

Note: All percentages related to Full Rated Load



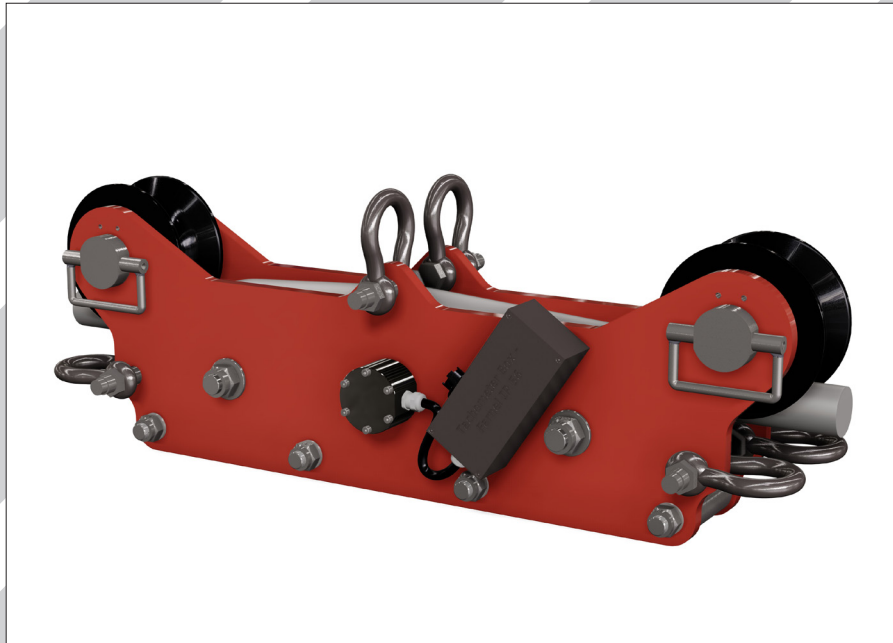
Image for illustration purposes only



Cell Type	Capacity	$\varnothing A$	$\varnothing B$	$\varnothing C$	$\varnothing D$	E	F	G
Comp 25	25 tonne	75	60	75	125	15	100	30
Comp 50-100	100 tonne	100	80	100	150	20	150	50
Comp 200	200 tonne	127	110	127	150	30	180	50
Comp 300	300 tonne	150	130	150	200	30	180	50
Comp 400	400 tonne	150	136	150	200	38	180	50
Comp 500	500 tonne	203	170.5	203	265	50	300	50
Comp 1000	1000 tonne	290	250	290	335	50	425	75
Comp 1500	1500 tonne	350	300	350	400	75	490	100

All measurements are in mm
Information subject to change without notice

RUNNING LINE MONITOR



SWRLM

Produced to accept cable diameters from 13mm to 88mm, the SWLRLM system electronically monitors the load on a running line (winch, crane, etc.) and is displayed digitally. It can optionally monitor the length of the line out and speed (including direction) in any engineering units. It's modular design enables facilities to be added or removed as requirements change.



RUNNING LINE MONITOR

STANDARD FEATURES

- ▷ Five wheel construction guides wire smoothly onto the monitoring wheel
- ▷ Wire may be fitted without tools, using a gloved hand
- ▷ Load pin forms shaft of centre wheel
- ▷ Strain gauges mounted in shaft bore (High impact protection & IP65)
- ▷ Wheels mounted on roller bearings with grease nipples
- ▷ Readily interfaces with SWLPC/J display
- ▷ 10-12 hour battery life between charges
- ▷ Battery charger
- ▷ 10m extension cable

OPTIONAL FEATURES

- ▷ Line speed monitoring
- ▷ Line out monitoring
- ▷ Mains operation
- ▷ PC interfacing & data logging
- ▷ Paperless chart recorder
- ▷ RS232 output

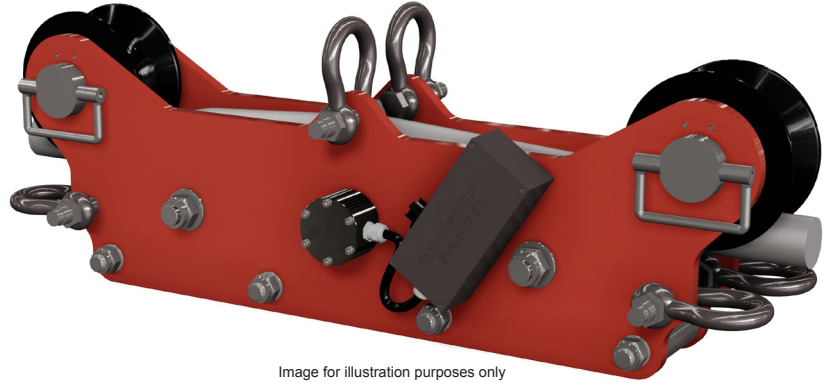
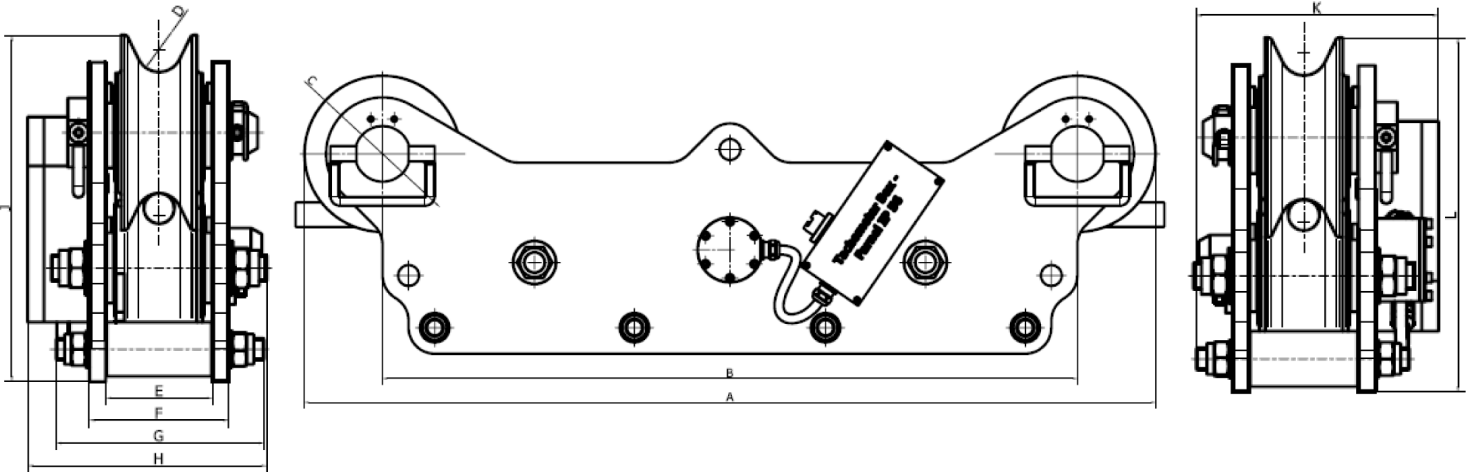


Image for illustration purposes only

Model	Suit Wire Rope Diameter	Maximum Capacity
RLM13	13mm - 19mm	5 tonne
RLM20	16mm - 26mm	15 tonne
RLM35	28mm - 40mm	35 tonne
RLM50	42mm - 52mm	50 tonne
RLM88	54mm - 88mm	150 tonne



Technical Specification

Model	A	B	C	D	E	F	G	H	J	K	L
RLM13	980	800	180	30	98	128	192	220	320	218	320
RLM20	980	800	180	30	98	128	192	220	320	218	320
RLM35	980	800	180	42	98	128	192	220	320	218	320
RLM50	980	800	180	To Suit	98	128	192	220	320	218	320
RLM88	1446	1118	230	To Suit	101	133	196	222	395	410	395

All measurements are in mm
 Information subject to change without notice

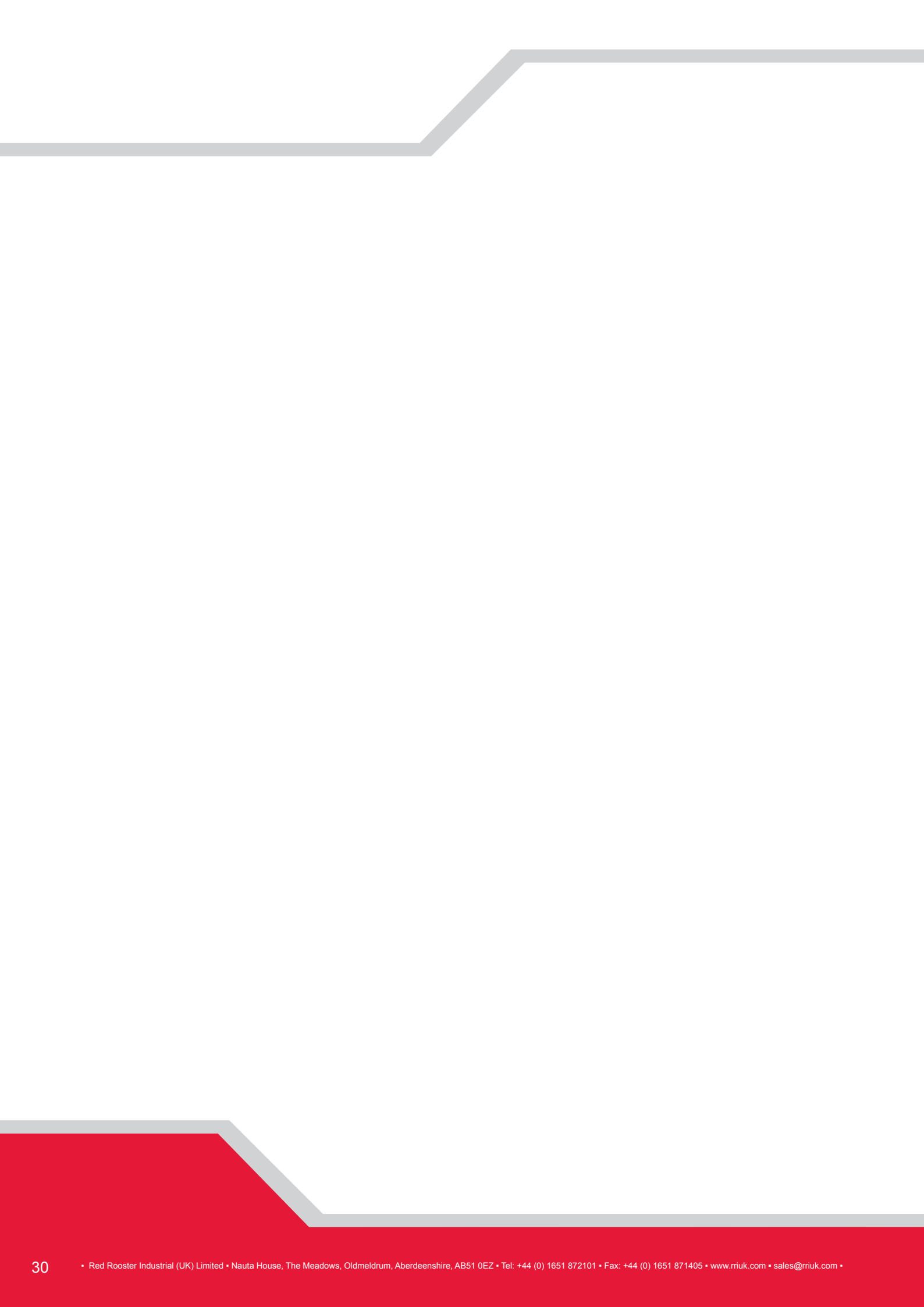


CRANE WEIGHER

CRANE WEIGHER

Manufactured in a range of capabilities from 200 kgs to 85 tonnes. The TEO crane weigher uses proven technology (hydrostatic, bourdon tube) and incorporates it in to a simple, functional and reliable weighing device.

Current health and safety legislation requires companies to have knowledge of the loads being handled regardless of the industry. In the TEO crane weigher we have an inexpensive load-measuring device which can be hung up, used and abandoned until the next time it is required, secure in the knowledge that it will continue to perform reliably.



CRANE WEIGHER

STANDARD FEATURES

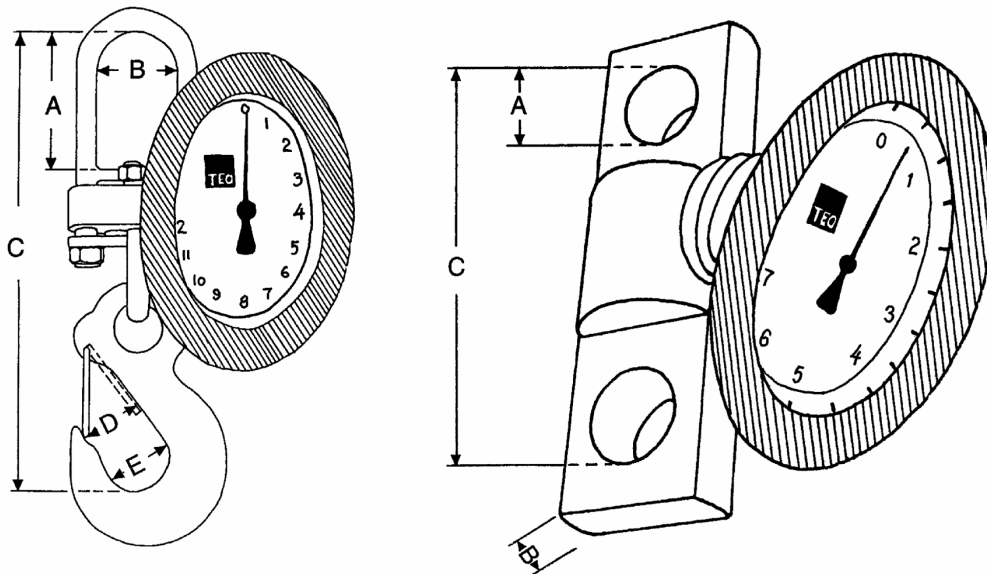
- ▷ Accuracy better than display resolution (1% of rated load, nominal)
- ▷ 100% taring capability (by rotating the dial device)
- ▷ Zero set by rotating the dial face
- ▷ Plexiglass dial face cover
- ▷ 160mm scale diameter
- ▷ Graduated in kilogrammes and tonnes
- ▷ Fixed link top suspension up to 5000 kgs
- ▷ Hook with latch bottom suspension up to 5000 kgs

OPTIONAL FEATURES

- ▷ Display graduated in pounds (lbs) or tonnes
- ▷ Display remote from the load cell (hydrostatic tube connection)



Image for illustration purposes only

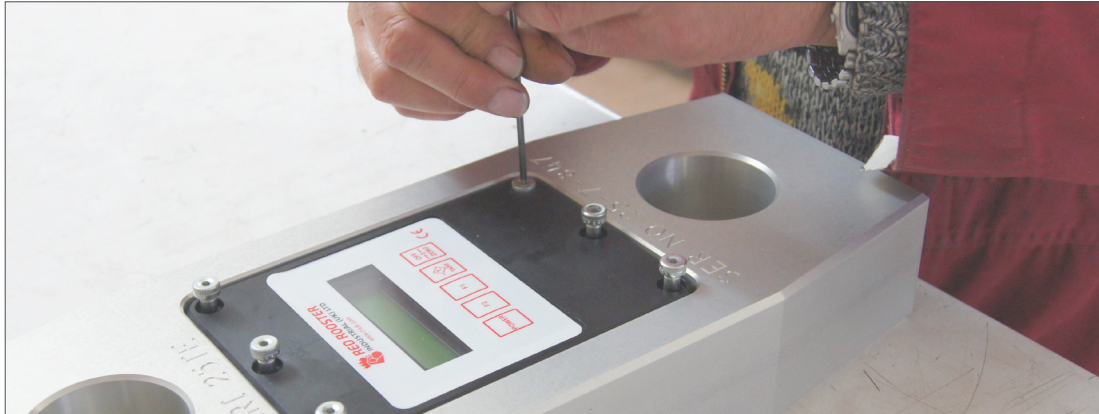


Type	Capacity (kgs)	Dial Increms	Weight (kgs)	A mm	B mm	C mm	D mm	E mm
200-SK1	200	1 kg	5	60	53	230	27	35
320-SK2	320	2 kg	5	60	53	230	27	35
500-SK2	500	2 kg	5	60	53	230	27	35
750-SK5	750	5 kg	5	60	53	230	27	35
1250-SK5	1250	5 kg	5	60	53	230	27	35
2000-SK10	2000	10 kg	5	60	53	230	27	35
3200-SK20	3200	20 kg	5.5	75	53	280	34	46
5000-SK20	5000	20 kg	6.5	75	53	300	42	56
7500-SK20	7500	50 kg	8.1	40	41	213	-	-
12500-SK50	12500	50 kg	8.1	42	30	215		
25000-SK100	25000	100 kg	12.9	55	42	262		
50000-SK200	50000	200 kg	30	75	50	335		
85000-SK500	85000	500 kg	60	85	60	390		

Information subject to change without notice

LOAD CELL REPAIR

Our team of electronic technicians have a vast knowledge of manufacturing Red Rooster load measuring equipment and the repair of other manufacturer's equipment. From standard units to the most complex weighing systems we can trace the defective component before repair and calibration.



CALIBRATION

Our calibration machines cover a range up to 100 tonne in both tension and compression, a 400 tonne tensile machine, and also a range of test weights.

All our calibration equipment is checked annually and is calibrated in accordance with BS 7500-1:2004.

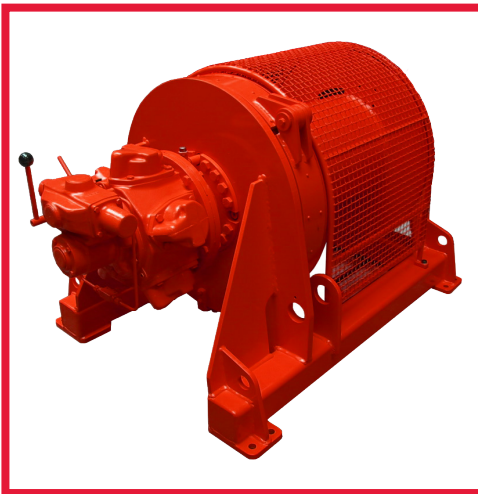
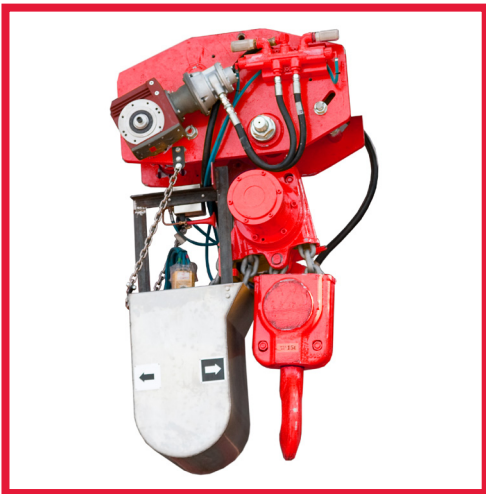
CERTIFICATION

Along with the calibration certificate you will also get a 'Certificate of Thorough Examination' as a load cell is seen as a piece of lifting gear by LEEA.



OTHER PRODUCTS

- ▷ **EMCÉ** WINCHES
- ▷ INDUSTRIAL HAND WINCHES
- ▷ JIB CRANES
- ▷ OVERHEAD CRANES
- ▷ **KITO** ELECTRIC HOISTS
- ▷ **KITO** MANUAL HOISTS
- ▷ **KITO** LEVER HOISTS
- ▷ AIR HOISTS
- ▷ LOW HEADROOM AIR HOISTS
- ▷ ATEX AIR HOISTS
- ▷ RACK & PINION AIR TROLLEYS





Head Office:

Nauta House
The Meadows
Oldmeldrum
Aberdeenshire
Scotland AB51 0EZ
Tel +44 (0) 1651 872101
Email sales@rriuk.com
Web www.rriuk.com

Depot:

Unit 26
Kelvin Way Trading Estate
Kelvin Way
West Bromwich
England B70 7TW
Tel +44 (0) 121 525 4162
Email apalmer@rriuk.com
Web www.rriuk.com

Depot:

Ul. Grabska 11
Niepolomice
32-005
Tel +48 12 278 56 66
Email biuro@rriuk.pl
Web www.rriuk.pl